



SALTEE SPLENDORA



HOME AND HOUSE EMBRACED



Life is fleeting away. Don't let it slip through the hands of

time. Embrace it. Give the love back.

Find it at Saltee Splendor - a G+7 Building with

63 Apartments, Located on the Rajarhat 6 Lane

Expressway. Hold it in your arms.



MAPS AND MINDS EMBRACED



All roads of the city lead to Saltee Splendora.

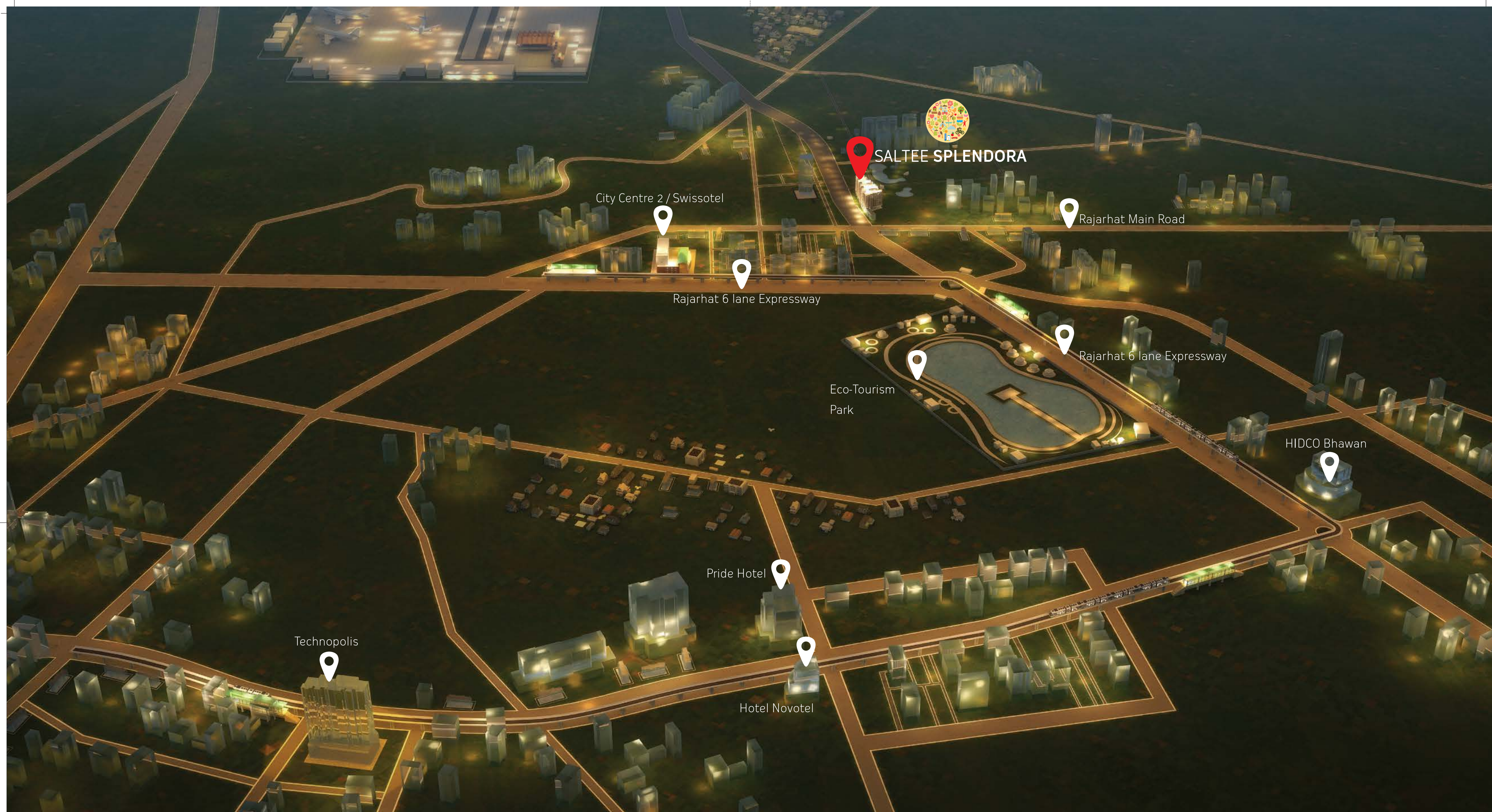
It is strategically planned out at Gopalpur, Rajarhat.

3 mins from City Centre II

4 mins from Eco-tourism Park & Convention Center

7mins from Kolkata International Airport

10 mins from Sector V, IT Hub of Kolkata



IN THE SEARCH
OF SERENITY



Yoga meditation area



Barbecue lounge



Children's play area

Adda zone

TERRACE AND TURQUOISE EMBRACED



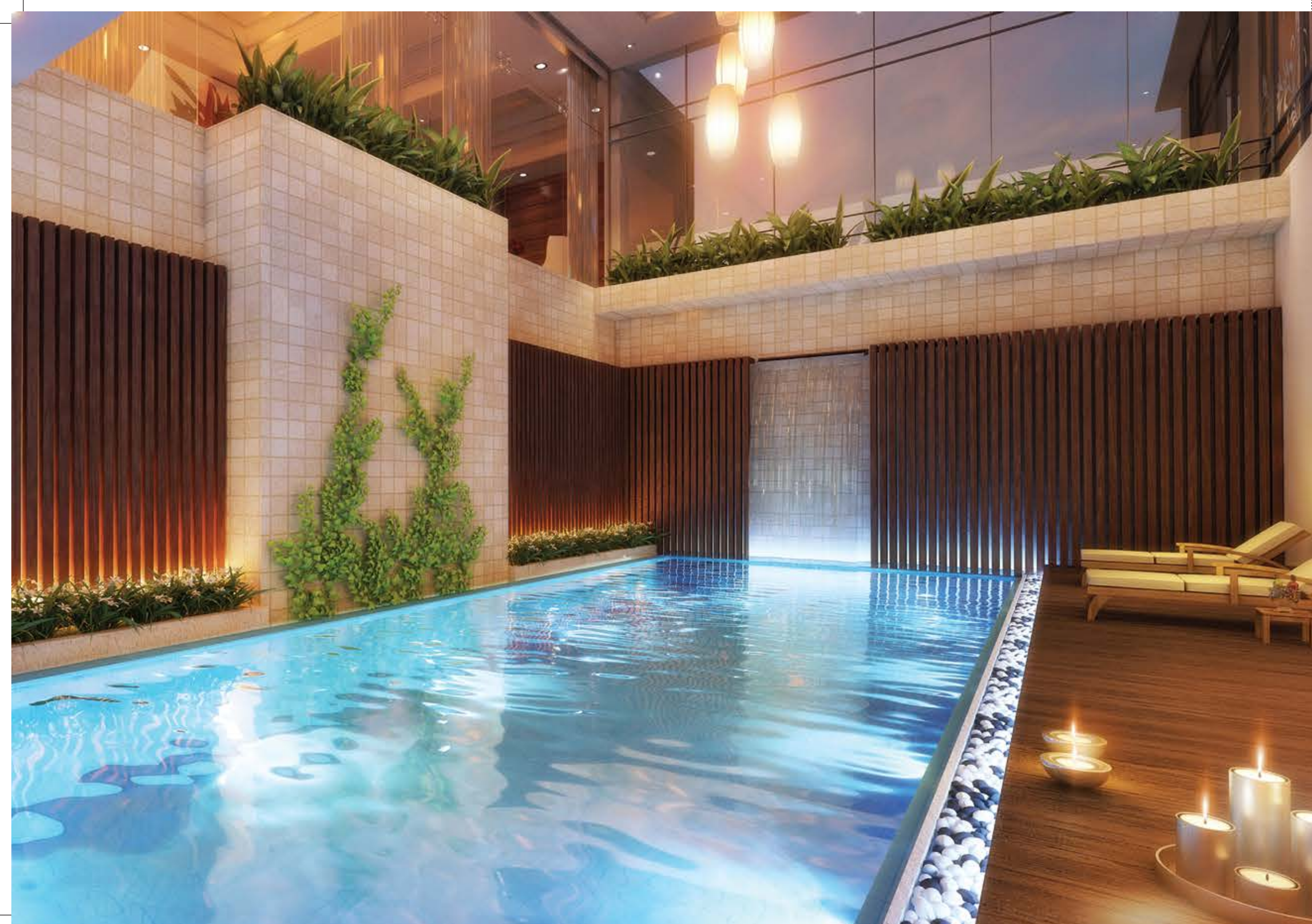
Terrace garden

Yoga meditation area

Barbecue lounge

Adda zone

Children's play area



CLUB INFINITO

SPORTS AND SOLACE EMBRACED



Club Infito offers you a range of exciting recreational lifestyle facilities. Whether it is about unwinding in the swimming pool after work or working out in the mornings at the gym. Team up with your next-door-neighbour for a time-out in the games room.



ENTRANCE LOBBY



COMMUNITY HALL



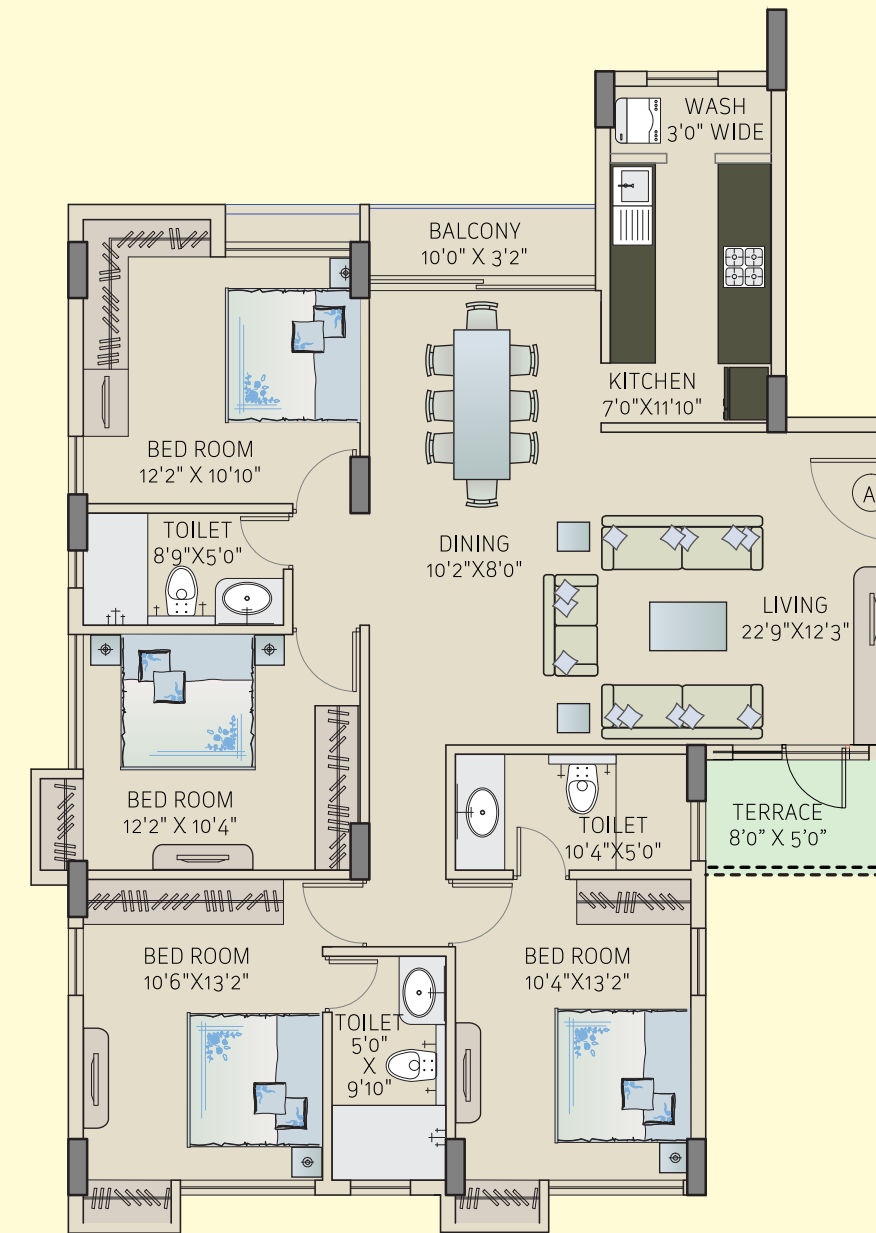
GAMES ROOM



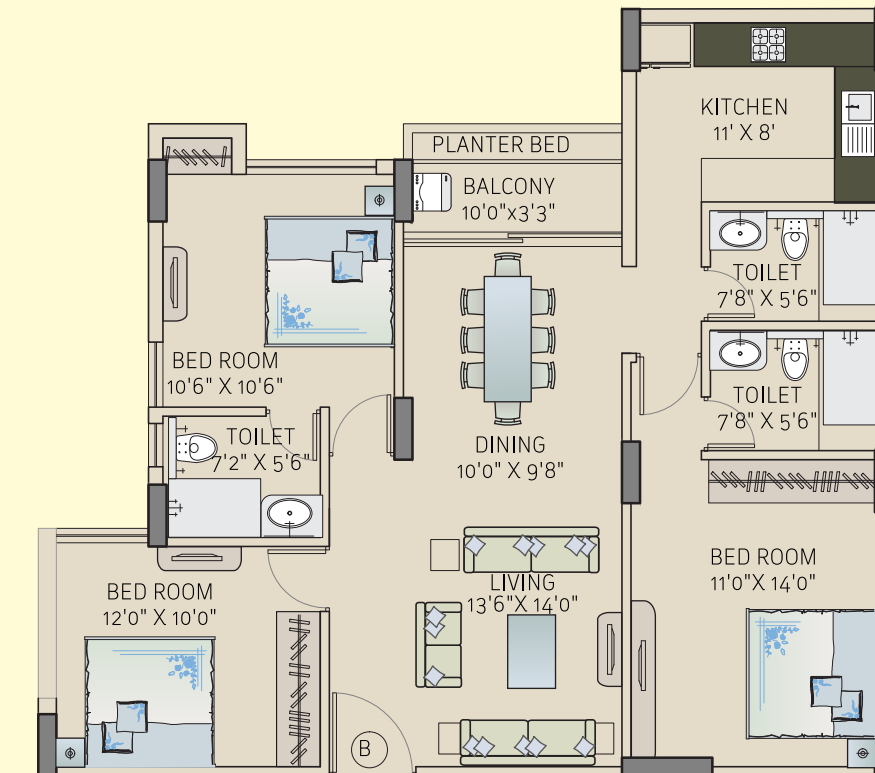
GYMNASIUM



ALL THE FLOOR PLANS ARE VASTU COMPLIANT

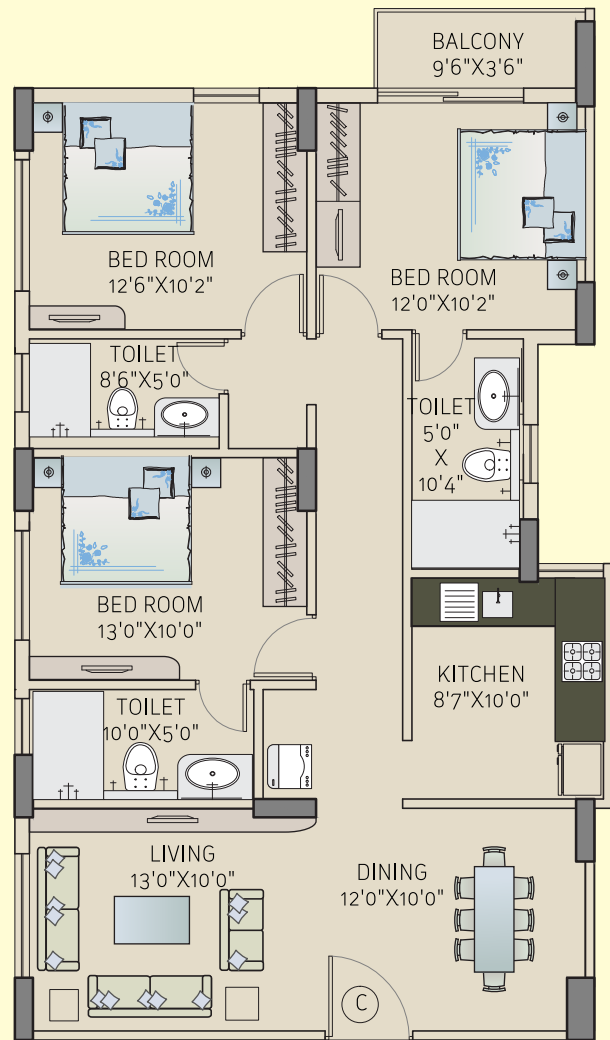


FLAT A	SBU
2nd, 4th, 6th FLOOR PLAN	1938 Sq.Ft.
3rd, 5th, 7th FLOOR PLAN	1993 Sq.Ft.
TERRACE on 3rd, 5th, 7th FLOOR	

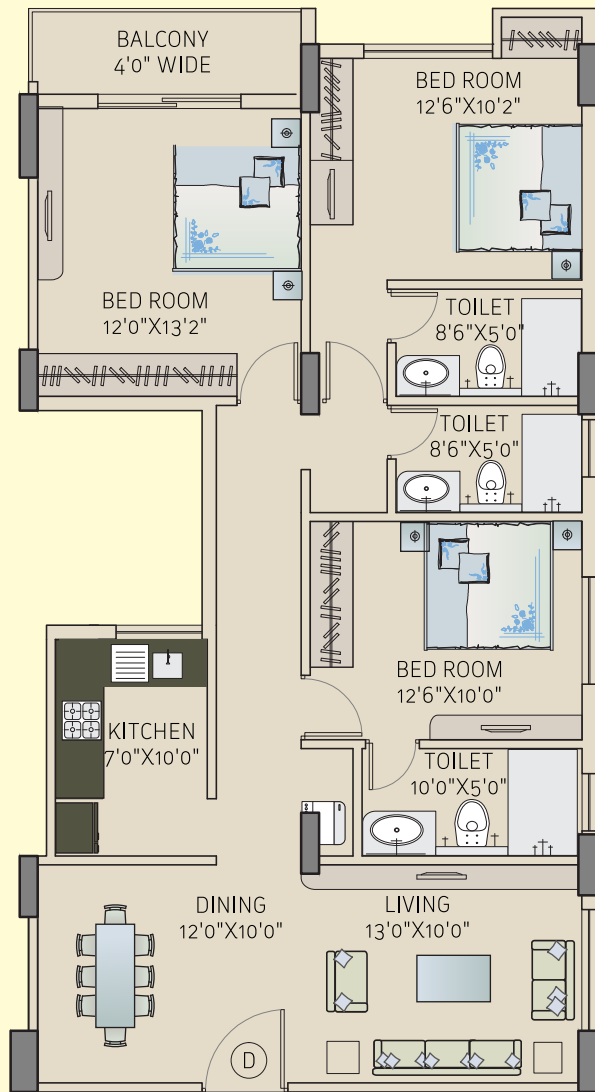


FLAT B	SBU
2nd to 7th FLOOR PLAN	1485 Sq.Ft.

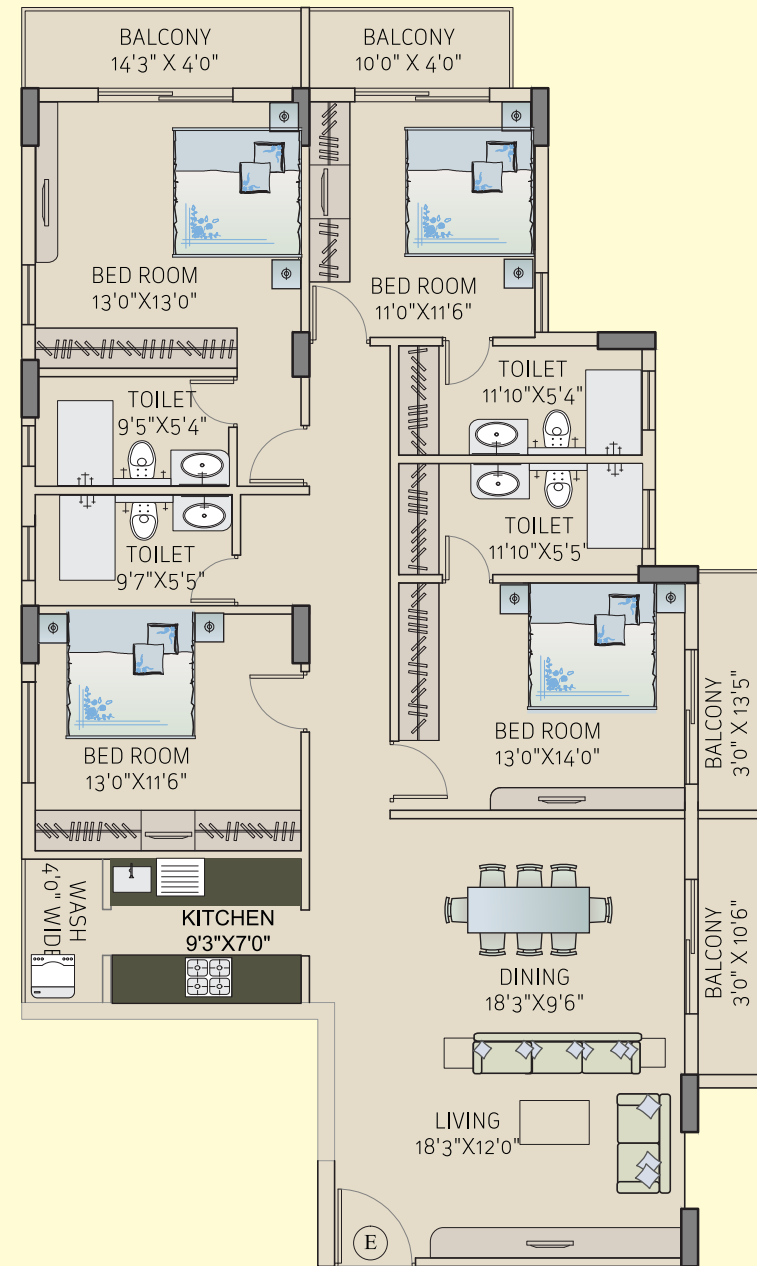




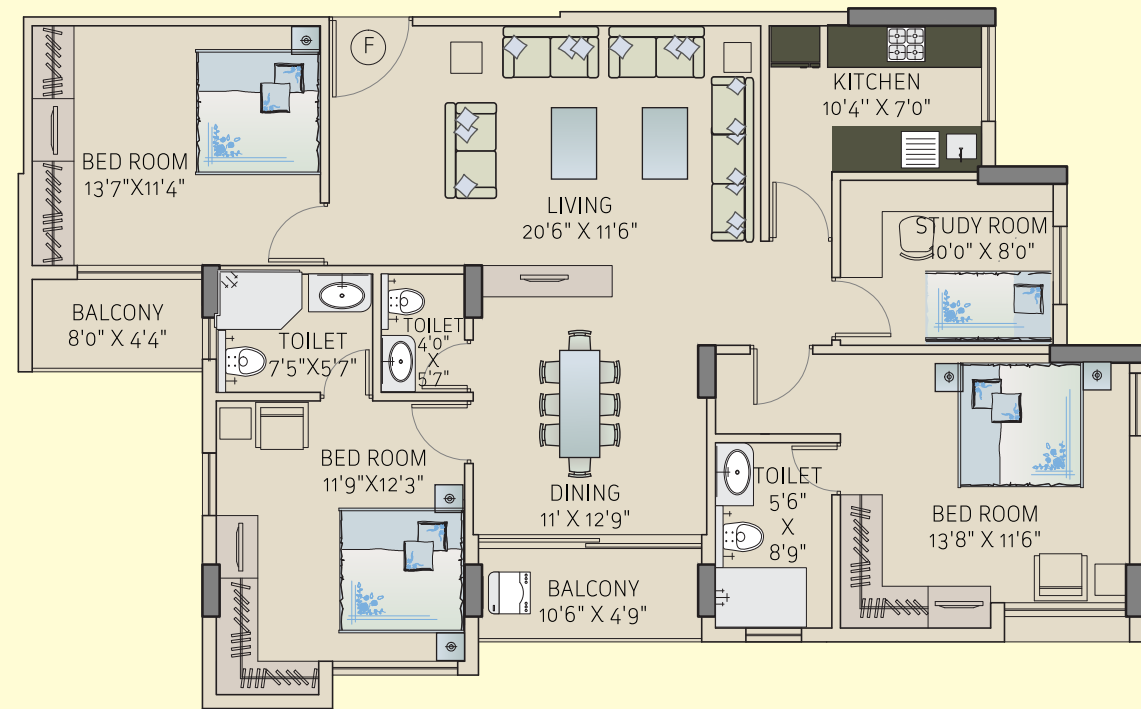
FLAT C	SBU
2nd to 7th FLOOR PLAN	1525 Sq.Ft.



FLAT D	SBU
2nd to 7th FLOOR PLAN	1611 Sq.Ft.

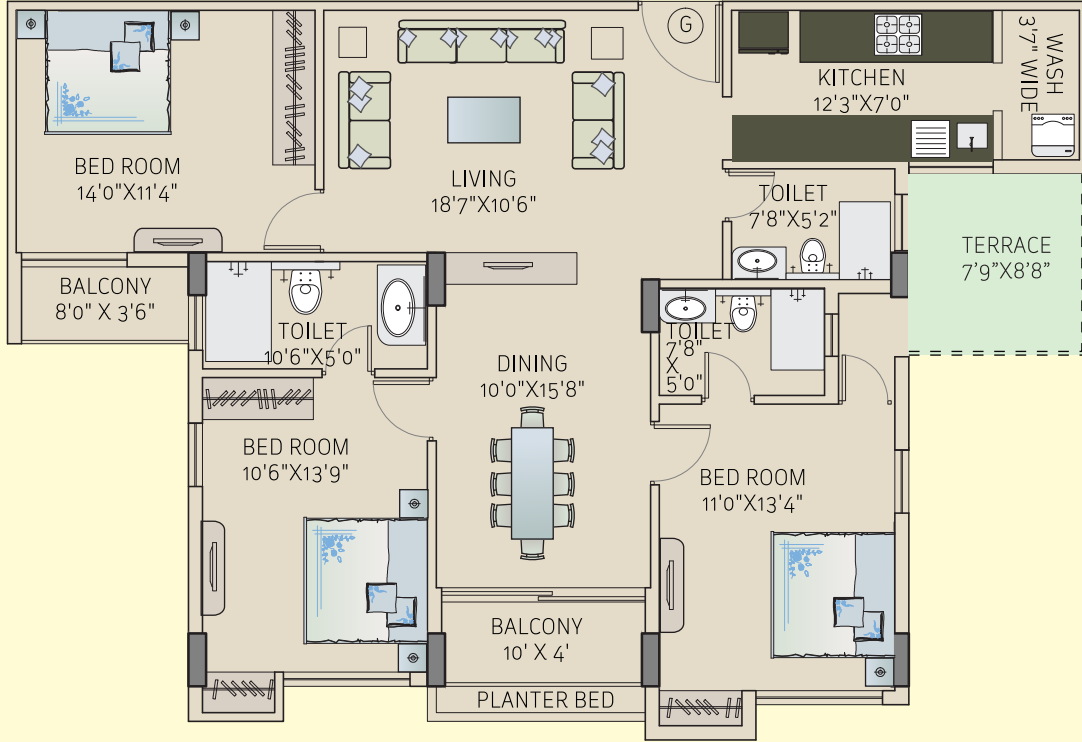
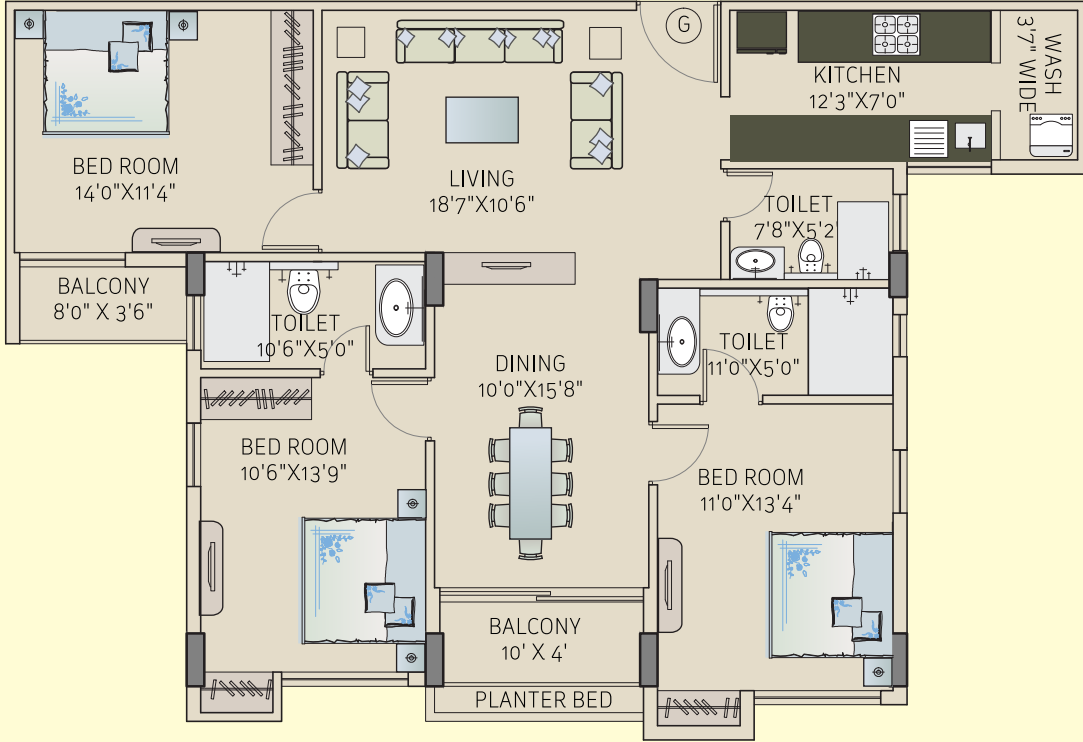


FLAT E	SBU
2nd to 7th FLOOR PLAN	2406 Sq.Ft.

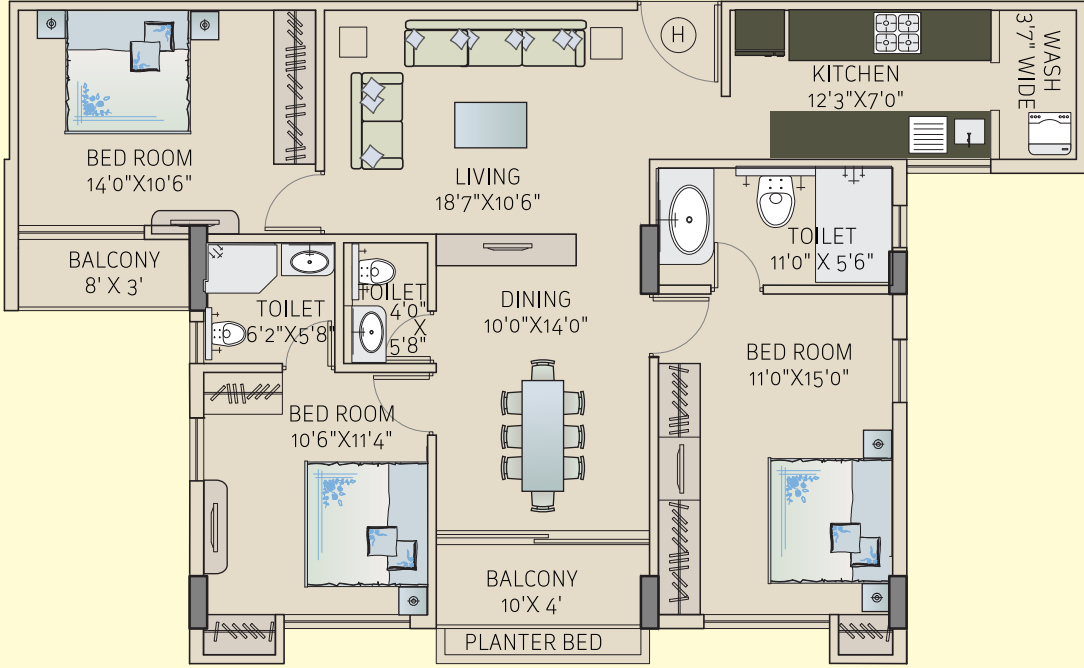


FLAT F	SBU
2nd to 7th FLOOR PLAN	1887 Sq.Ft.

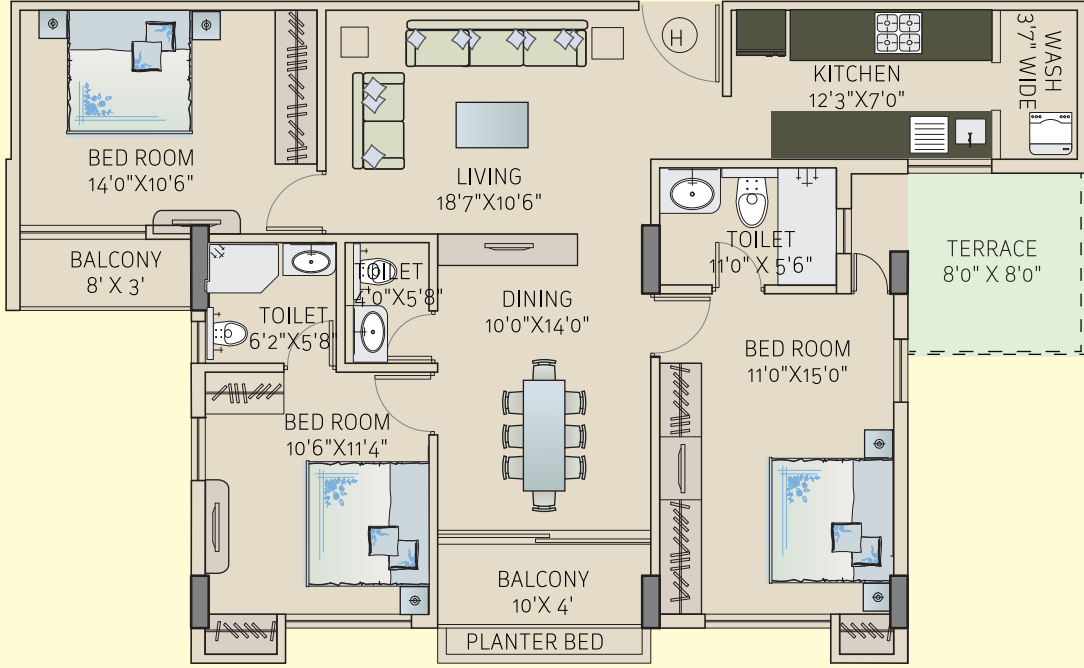


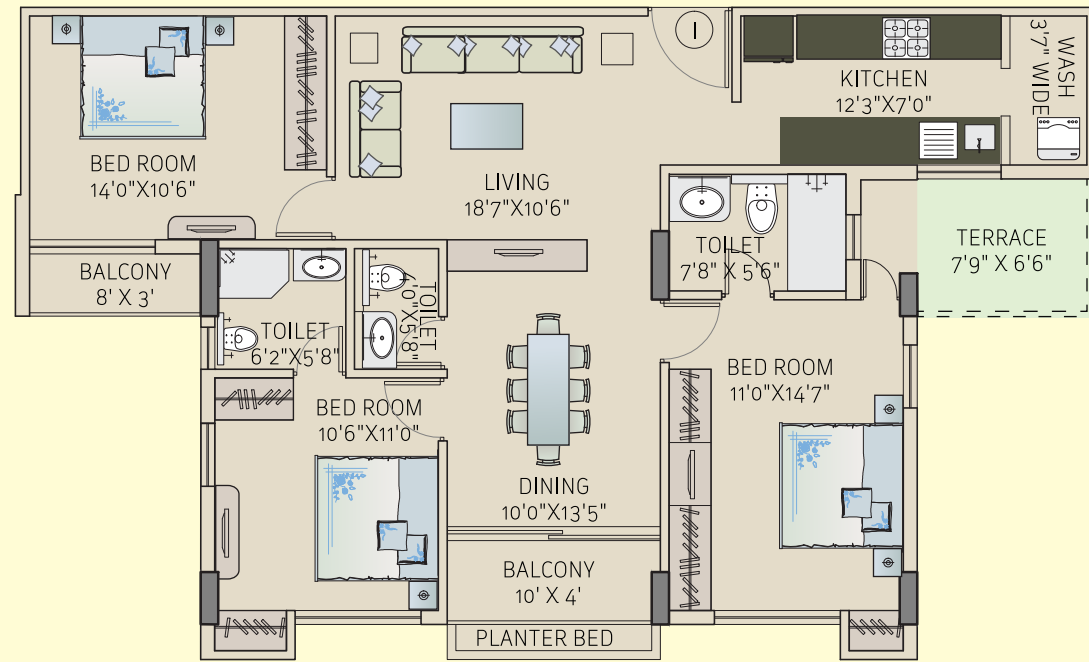
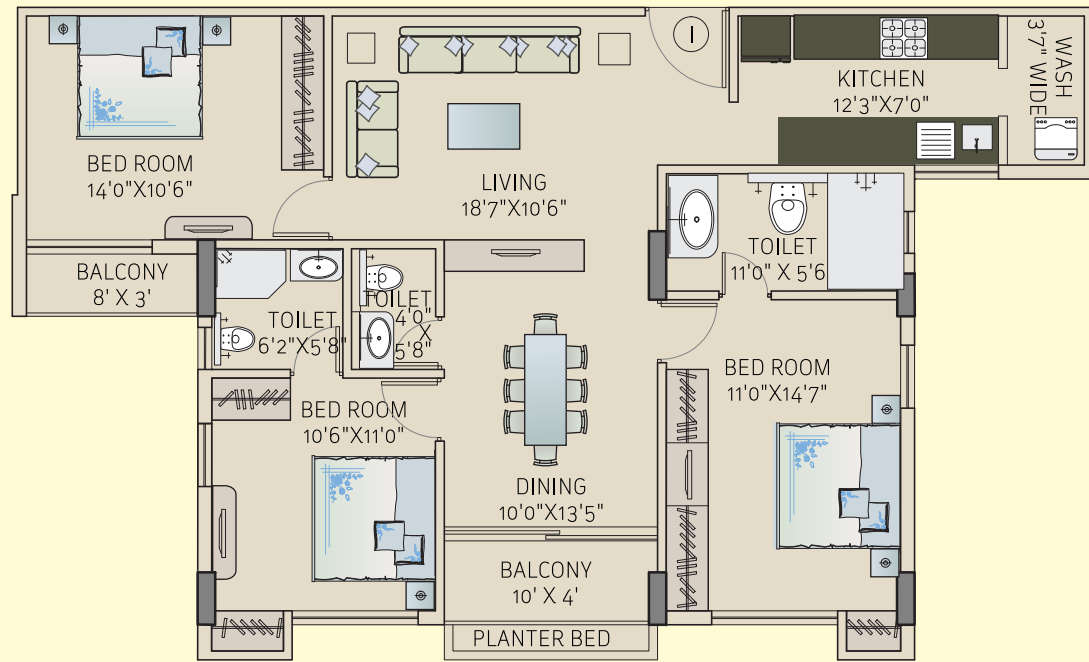


FLAT G	SBU
2nd, 4th, 6th, FLOOR PLAN	1739 Sq.Ft.
3rd, 5th, 7th FLOOR PLAN	1828 Sq.Ft.
TERRACE on 3rd, 5th, 7th FLOOR	



FLAT H	SBU
2nd, 4th, 6th, FLOOR PLAN	1584 Sq.Ft.
3rd, 5th, 7th FLOOR PLAN	1666 Sq.Ft.
TERRACE on 3rd, 5th, 7th FLOOR	





FLAT I	SBU
2nd, 4th, 6th, FLOOR PLAN	1567 Sq.Ft.
3rd, 5th, 7th FLOOR PLAN	1632 Sq.Ft.
TERRACE on 3rd, 5th, 7th FLOOR	



SPECIFICATIONS

Living / Dining / Lobby / Passage

- Floor : Vitrified Tiles
- Walls & Ceilings : POP / Wall Putty

Bedrooms

- Floor : Wooden laminated flooring in Master Bedroom / Vitrified Tiles
- Walls & Ceilings : POP / Wall Putty

Kitchen

- Walls : Rectified joint free tiles up to 2' on counter walls and wash areas
- Floor : Vitrified Tiles
- Counter : Granite Counter
- Fitting Fixtures : Stainless Steel Sink with Jaquar or equivalent make
- Wall & Ceiling : POP / Wall Putty

Bathrooms

- Walls : Joint free rectified tiles
- Floors : Anti Skid Ceramic tiles
- Sanitary Ware : Parryware / Hindware or equivalent brands
- CP Fittings : Jaquar or equivalent CP make

Doors & Windows

- Entrance Doors : Decorated Flush Doors
- Internal Doors : Water and Termite Proof Flush Doors
- Windows : Anodized Aluminum sliding windows

Electrical

- Modular switches : Northwest/Havells/Anchor or equivalent make & copper wiring

Power Backup

- Common Areas : 100%
- Apartments : 2 kva - 3.5 kva depending on the apartment size

Security Systems

- Intercom
- CCTV Camera

Lobby

- Entrance : Exquisitely designed at ground floor
- Lift : 4 Automatic lifts of Kone/Otis/Johnson or equivalent make



FEW OF OUR LANDMARK PROJECTS



Saltee Spacio



DN 18



JC 25



Saltee Plaza



JC 21



Saltee Itech

DREAM AND REALITY EMBRACED



Over the last decade, with an indomitable team and incessant passion, Saltee Group has been providing the new-age real estate solutions across all sections of society. And this led to the creation of Saltee Spacio, Saltee Chrome, Saltee Emerald, Saltee Vision, Saltech etc.

The success of these projects inspired them to create more. So, the journey is on with Saltee Plaza, Saltee Courtyard, Saltee Identity, Saltee Synergy and more. Building on this experience and expertise, they are now ready with a pan-India growth strategy to deliver an unprecedented number of innovative projects in the forthcoming years.